



Automatic measuring and dosing of chemicals.

A new way to equip your pool. Provides optimal water quality with automatic monitoring.

- **Continuously measures pH and free chlorine levels**
- **Two digital control units with easy to see LEDs**
- **Simple to set and read**
- **Built-in pre-filter**
- **Electronic flow meter**
- **Convenient access for calibration**
- **Separate modules for each measuring electrode**
- **Pump or chlorinator as accessories**
- **Automatic dosing of chemicals**
- **Simple to install**



MiniMaster - measuring and dosing unit



Advanced and intelligent MiniMaster for private pools.

Now it's here – the MiniMaster measuring unit that offers you continuous monitoring and automatic dosing (disinfection) to safeguard water quality in the same way as in public baths and large hotel pools. MiniMaster is based on the same technology as well-known Autodos, which is currently in its third generation. With a MiniMaster installed in your pool, you need never again worry about your water quality – because MiniMaster handles it all automatically.

MiniMaster monitors your water quality on an ongoing basis, making it simple to maintain clean and clear water at all times. Whenever necessary, the right quantity of chemicals is dosed into the water via a pump or chlorinator (option). This in turn ensures steady and low consumption of chemicals.

You no longer need to ask anyone for help with dosing your pool when you're away or on holiday. MiniMaster does it all for you and your pool water will be clean and clear when you return.

MiniMaster is available in several versions to suit all pool types.

The most advanced version of MiniMaster does virtually the whole job for you. A MiniMaster equipped with all the options is a complete measuring and dosing unit. The water's pH level is measured with the help of pH electrodes and chlorine levels are checked using a chlorine electrode. Clear and easy-to-see LEDs show the status of your water quality. Green indicates the set optimal value, yellow shows that it is probably time for the next dose or that the previous dose was too large. When the red LED comes on, the value is too high or too low and MiniMaster will automatically add the correct dose of chemicals to achieve the right pH and/or chlorine levels. Calibration of the unit is very simple and is done by simultaneously pressing two buttons on the control unit. In order to provide exact readings, MiniMaster is equipped with a flow meter and a flow adjustment device for correct calibration.

MiniMaster is also available in a single-channel version that monitors either the water's pH value or its chlorine value. MiniMaster clearly indicates the quality of the water with the help of LEDs. Indication takes place in the same way as above.

Specify an optional pump or salt chlorinator for dosing of acid/alkali (pH) or chlorine, and you will have a complete unit.



The pool water's measured values are shown as symbols in the display via the seven LEDs. During measurement, one of the diodes flashes. When both measurement and dosing are activated at the same time, one of the diodes glows steadily.

Electronic control panel with LEDs

- Dosing function on/off
- Timer function for forced chlorination (1 min)
- Green indication shows the set optimal value
- Yellow indication shows deviation from set value
- Red indication shows a significant deviation from set value
- Flashing red diodes indicate that flow is too low
- Current flow indication

In order to simplify maintenance as much as possible, for instance when shutting the pool for the winter, replacing worn electrodes or carrying out reference measurements of electrodes, the flow cell model is designed to tilt forward. The module also features a drain tap for test water.

Calibration or adjustment of flow is carried out on the flow cell module. The transparent case in front of the module also makes it very easy to verify that there is flow to the unit.



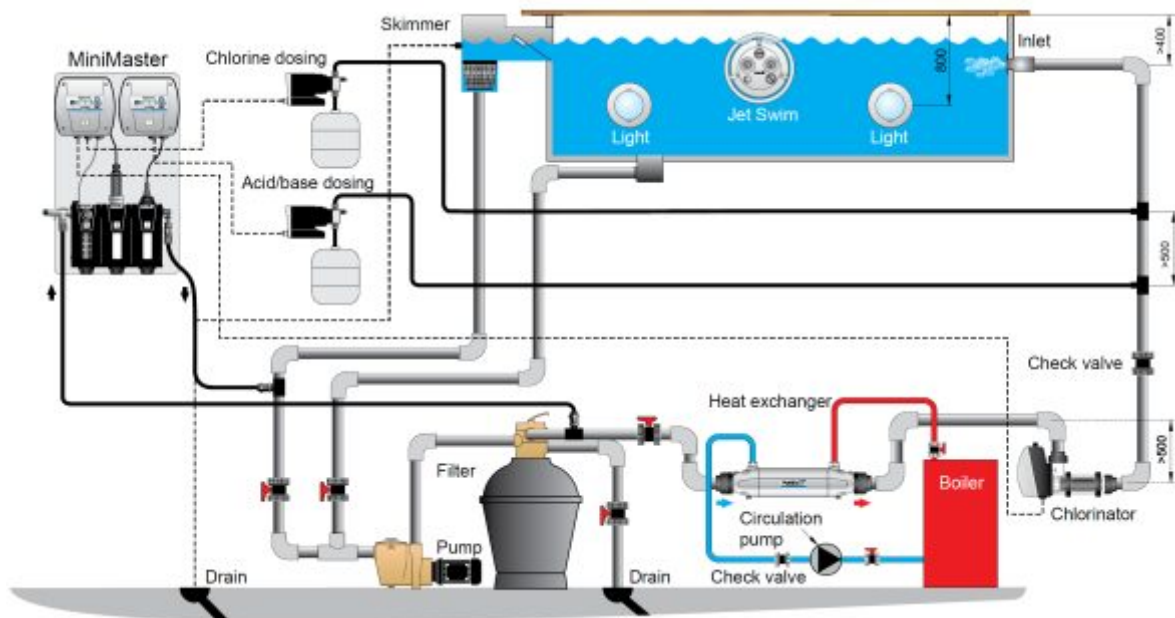
Options

In order for dosing to take place accurately and correctly, a pump is used since this provides steady, uniform dosing. The pump is factory-calibrated to function with most pools as soon as the MiniMaster is started up. If necessary, dosing can be adjusted to suit your specific pool.

The pump features a transparent lid, allowing you to see when it is in operation. It is compact and easy to fit even in congested locations. It is supplied complete with installation brackets, connecting hoses and wiring, making installation even easier.

MiniMaster - features nad benefits

- **Digital control panel** - Simple to set and use.
- **Measuring electrodes of the highest quality** - For accurate measurement.
- **Flow meter** - For exact measurement results.
- **Finest mesh built-in filter** - Prevents small particles from affecting the measuring process.
- **Fresh, modern design** - Small and compact. Simple to handle and maintain.
- **Tiltable flow cell module** - Makes maintenance easier than ever.
- **Transparent flow cell** - Clear, easy to read overview of flow.
- **Drain tap** - Easy to take measurements at the proper location.
- **Automatic measurement of water quality** - Delivers an optimised and economical supply of chemicals.
- **Control of pump and salt chlorinator** - Steady, even operation.



Technical data

	pH/ chlorine	chlorine	pH
Power consumption excl. dosing equipment	4W	2W	2W
Power consumption dosing equipment (max)	2x100W	100W	100W
Rated current		1 A	
Voltage	220-240 1~N 50/60Hz		
Temperature range	0 till +45°C		
Sealing class	IP44		
Dimensions LxWxH	310x84x500 mm		
Weight	2 kg		
Pump			
Backpressure	1,5 bar		
Suction height	1,5 m		
Pump output	3,5W		
Hose material	Santopren		

