



Autodos M1-M2-M3

Automatic measuring and control unit in modern design with a new flow cell.

- Measures pH, redox, free chlorine and total chlorine
- Automatic dosing of chemicals
- A separate module for each electrode
- Easy access for calibration
- Built-in pre filter
- Temperature sensor
- Electronic flow meter
- Alarm and safety settings
- User access protection
- Easy installation



Pahlén Autodos - measuring and control unit



Autodos is the easy way to manage water quality

Highly intelligent Autodos for commercial pools.

The optimum solution for the public swimming pool is to install a Pahlén Autodos in the system. The water quality is continuously monitored, which makes it easier to maintain a clear and clean water. Through the use of automatic dosing, the chemical consumption is controlled and optimized, as a result of a more even flow of chemicals.

Additional control and disinfection are obtained with a Pahlén CO₂ unit and UV light.

Autodos is a well known, reliable and tested technology in it's third generation when it comes to measuring and monitoring. Autodos is available in a variety of versions and can monitor pH and chlorine in the form of redox, free chlorine and combined chlorine.

Autodos offers a wide range of adjustments to suit all pool types. Chlorine, pH, flow and temperature readings are shown in clear and easy to read LED displays. Autodos is easy to use and provides exact readings for accurate monitoring and disinfection of pool water. Furthermore it is very easy for the operator to overview and control the water quality.

Pahlén's in-house developed Autodos is available for all requirements, from the Autodos M1 which is a single-channel instrument for monitoring of pH, redox, free chlorine or total chlorine, to the most advanced Autodos M3 which is a three-channel instrument for monitoring of pH, free chlorine and combined chlorine.

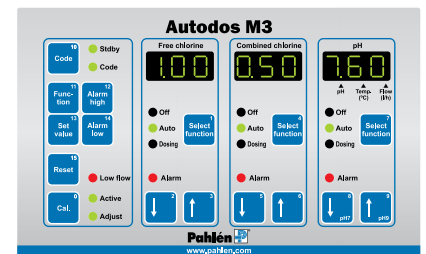
The Autodos has a new flow cell. This new flow cell in transparent PVC has a separate module for each electrode. Each module can be connected in series depending on the application and the number of electrodes used. The starting module contains prefilter, flow meter, flow guard, temperature sensor and a visual indication of the flow through the flow cell.

The flow cell is neatly concealed with a transparent cover, that is easy to open when needed e.g. for calibration and taking samples.



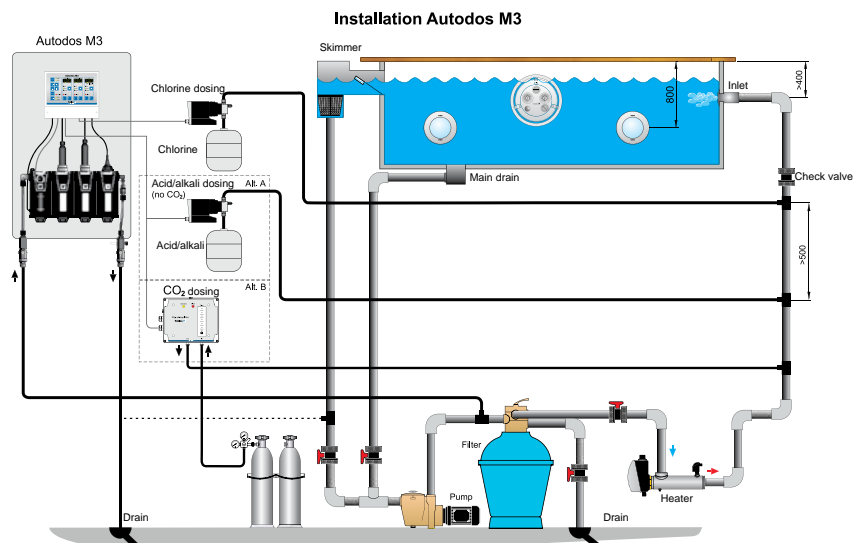
Electronic digital control panel

- Easy access to all functions from the control panel
- Clear overview of free chlorine, combined chlorine and pH values
- Clear display of temperature (°C)
- Clear display of the flow (l/h)
- Clear indication when a too low or too high value



The new designed Autodos has a flow cell module that is tiltable forward. This makes the maintenance easier than ever.

The Autodos is also equipped with a transparent cover in front of the flow cell module that makes it easy to see that there is a flow through the unit. The flow rate can also be read on the display



- **Digital control and display** - Easy to set and operate.
- **New modern design and material** - For easy handling and maintenance.
- **Tiltable flow cell module** - Makes the maintenance easier than ever.
- **Transparent flow cell with flow meter** - Clear view of the current flow.
- **Starting module with prefilter, flow meter, flow guard, temperature sensor** - Everything in one place for easy maintenance.
- **User access protection, that can be activated when necessary** - Prevents unauthorized access to the control unit.
- **Customized alarm levels** - Easy to set your own values for pH, redox, chlorine and flow.
- **Built-in safety functions** - Prevents dosing when there is a too low flow or the pH-values are beyond the set alarm levels.
- **Setting of maximum dosing time** - Built-in safety function to prevent overdosing.
- **Accurate measuring of chemical levels** - Optimized and economical consumption of chemicals.

Autodos M1

Autodos M1 has one measuring unit and can measure one of the following: free chlorine, pH, redox or total chlorine.

Item no.

- 416500 Autodos M1 for free chlorine
- 416510 Autodos M1 for pH
- 416520 Autodos M1 for redox
- 416530 Autodos M1 for total chlorine

Autodos M2

Autodos M2 has two measuring units and can measure pH and free chlorine alternatively pH and redox.

Item no.

- 416540 Autodos M2 for pH and free chlorine, electrode PB200
- 416542 Autodos M2 for pH and free chlorine, electrode CLE3
- 416550 Autodos M2 for pH and redox

Autodos M3

Autodos M3 has three measuring units and measures pH, free chlorine and redox alternatively pH, free and combined chlorine.

Item no.

- 416560 Autodos M3 for pH, free chlorine and redox, electrode PB200
- 416562 Autodos M3 for pH, free and combined chlorine, electrode CLE3



Autologger is a unit that connects Autodos to a PC for logging pH and chlorine measurement values and for registering alarms. The system consists of a datalogger and a communication module. Via a PC, measurement parameters such as nominal value and alarm limits can be altered and alarms can be reset.

Autologger

Item no. 41620

- 32 kB EEPROM
- Real time clock
- 24 kB (4500 values) with average values per minute for 4 channels
- 8 kB events (255 pcs) e.g. alarm or calibration

Communication module

Item no. 41625

- RS232-communication to PC, cables included
- Two-wire communication to Autodos
- External transformer 9VAC for voltage supply



